

What have you spotted?



winter



fungus

bracket fungus or bright jelly fungus on dead branches



buds

long ones, clusters, opposite pairs and big sticky ones!



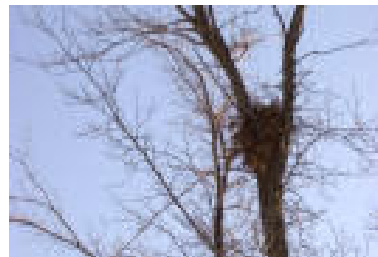
poo

shiny oval-shaped droppings from roe deer



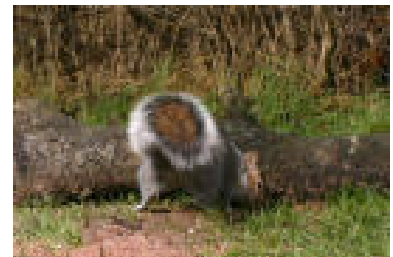
nest

can you see an old bird's nest in the bare tree branches?



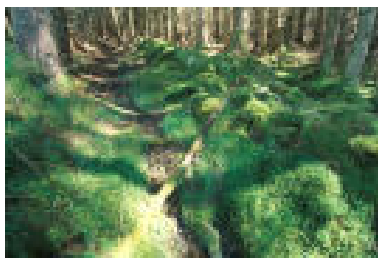
drey

an untidy, twiggy squirrel nest about the size of a football



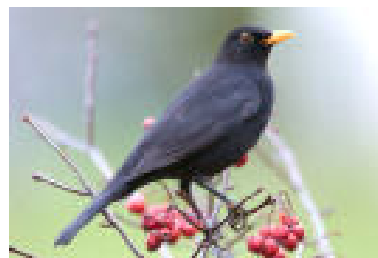
nuts

can you see any squirrels or jays looking for their stores?



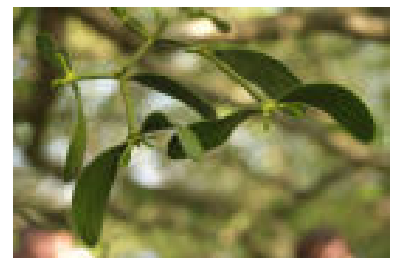
moss

cushion moss in beech woods under oaks or conifers



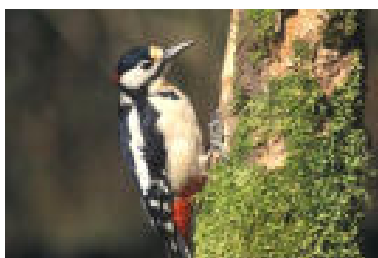
birds

look for food - red berries on hawthorn, dog rose and holly



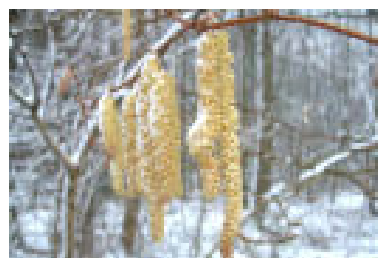
mistletoe

balls of mistletoe growing in the tree tops



noise

woodpeckers drumming



catkins

hazel catkins in February



people



learning through the seasons