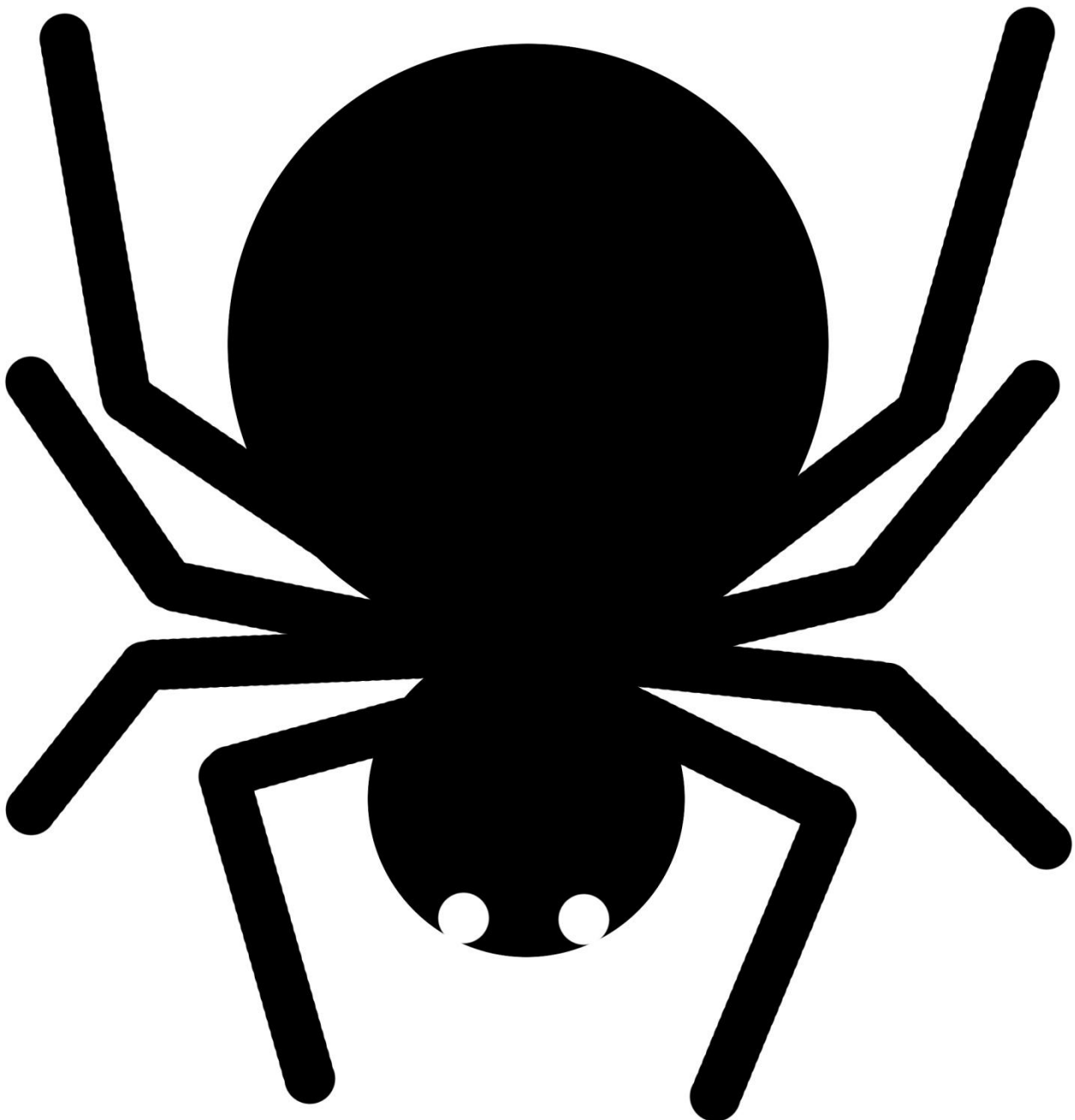


Spider pumpkin stencil

Cut out the **black** areas then stick this stencil to the front of a pumpkin (after you've scooped the flesh and seeds out).

Using a permanent marker pen draw around the shapes onto to pumpkin. When you've finished, remove the paper and, using a knife – careful(!), cut out the shapes that you've just drawn onto the pumpkin. You might need a bit of help with this as pumpkins can get very slippery :O)



Start your own adventure at naturedetectives.org.uk

Fun stuff for kids, families and schools by the Woodland Trust, a charity registered in England & Wales (294344) and Scotland (SC038885) at Kempton Way, Grantham, NG31 6LL.
© 2011 You may print and copy this sheet, in its entirety, for non-commercial purposes. Do not put this pdf on other websites - please link to our download page. Questions? 0800 026 9650